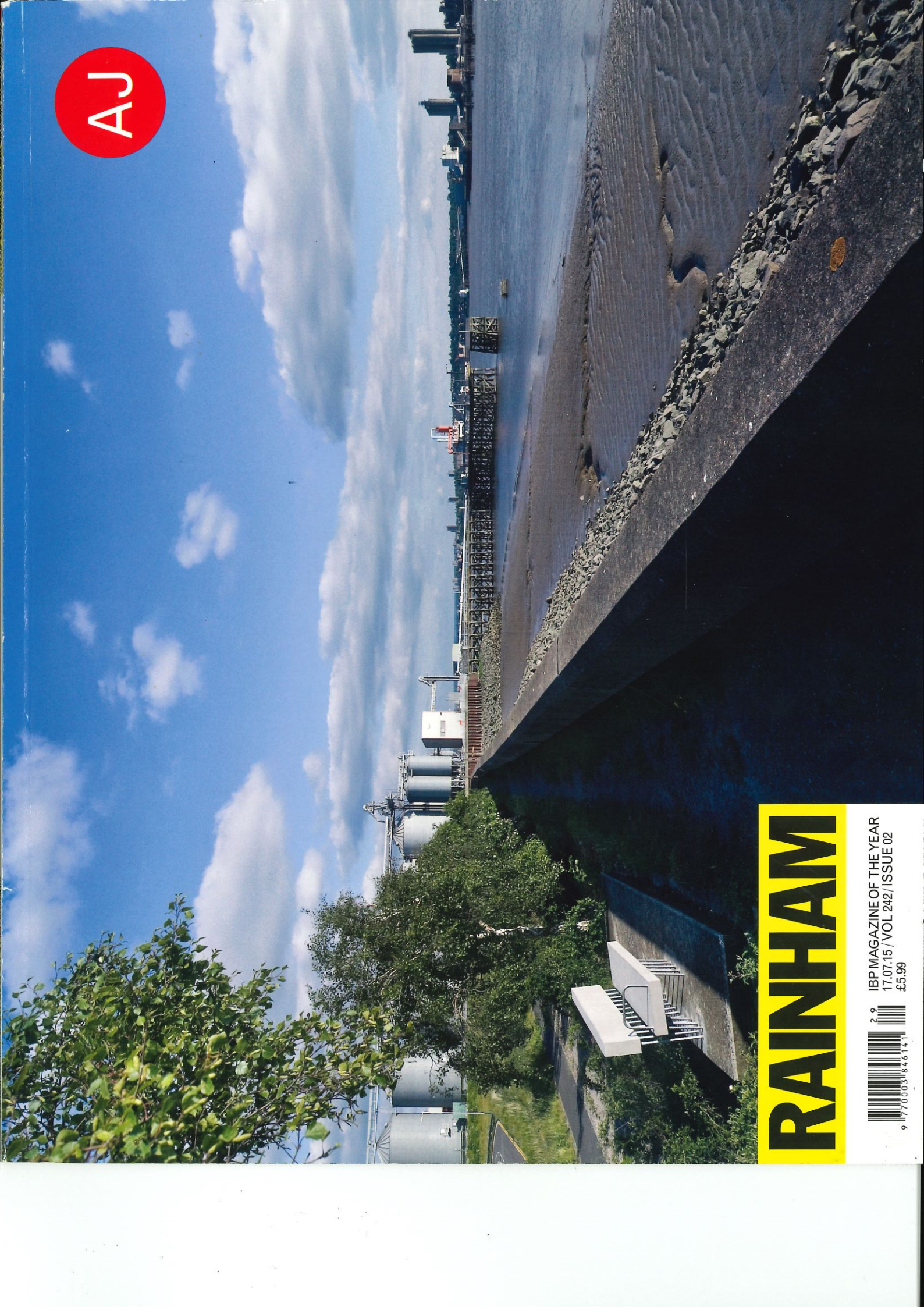


AJ



RAINHAM

IBP MAGAZINE OF THE YEAR
17.07.15 / VOL 242 / ISSUE 02
£5.99



9 770003 846141



JAKOB SPIESTERSBACH

East was appointed by the London Borough of Havering and the London Thames Gateway Development Corporation in December 2008 to produce a public realm masterplan for major sites: Rainham Creekside, Rainham Station interchange and Tesco's walkway.

Rainham Village is historically significant and extraordinary in its spatial character, hosting a dense collection of listed buildings along with a unique urban pattern dating back hundreds of years.

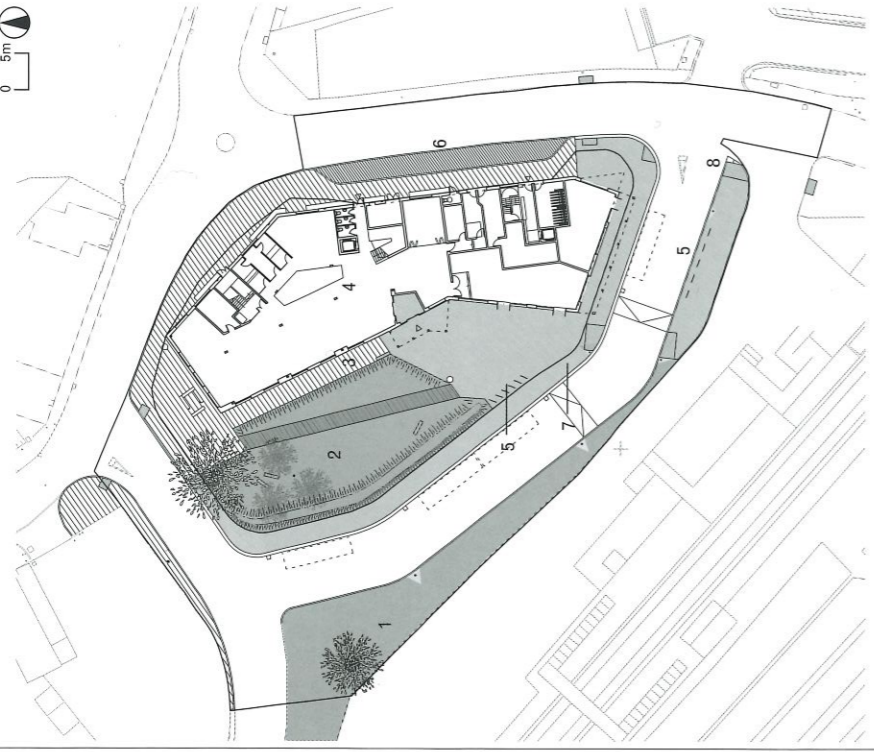
The masterplan set out to reveal and improve spatial and physical relationships between all parts of Rainham, to give pleasure to users and to ensure a high-quality future for the village, from the Tesco site down to the river.

This has been achieved through adjustment to local roads, improved pedestrian routes, revised wayfinding and place-naming, a new palette of street furniture, improving the village's gateways and improving access to greenspaces.

Julian Lewis, director, East

Data
Date commenced 2009
Date completed 2013
Contract value £1 million
Location Rainham Bridge Road / Uppminster Road South

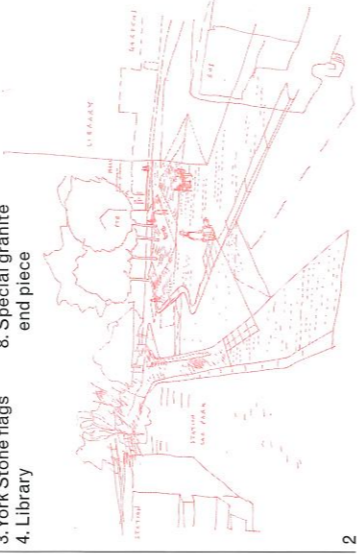
1. A bench on the square



1. Existing grass embankment
2. Grassy bund
3. York Stone flags
4. Library

Data
Date commenced 2009
Date commenced 2011
Contract value £300,000
Location Ferry Lane / Celtic Farm Road

2. Concept sketch for station interchange public realm



Data
Date commenced 2008
Date completed 2010
Contract value £60,000



4. Concept collage
5. Rainham public realm concept sketch



Data
Date commenced 2010
Date completed 2012
Contract value £700,000
Location Ferry Road

6. East designed the new stairway access to the riverside
7. Rainham riverside, concept collage

Subsequent projects designed and implemented by East include:

- *Railing Hall*, community garden and link to Tesco, designed in conjunction with artist Mark Pimlott
- Rainham village Cardinal Seat, a monumental companion to the war memorial designed in conjunction with artist Mark Pimlott
- Viking Way improvements, kerb infrastructure, clay cobble paving, new civic seating (with Michael Marriott), and park entrance improvements
- Rainham interchange, public realm space adjacent to MacCreanor Lavington's library, linking to Rainham Station
- Riverside improvements, access, seating and a new landscape
- Three Crowns Cafe, a riverside destination yet to be built